

Manntree[®]
— Paint My Love —



Burberry Sloane

Contrasting elements of different textures achieve a harmonious balance
between ruggedness and luxury, strength and softness.

Manntree[®]
— Paint My Love —

Manntree Paint Co.,Ltd.
Tel: +44 161818 8708
Web: www.manntree.co.uk

Headquarters :
Unit 1804 South Bank Tower, 55 Upper
Ground.ondon United Kingdom Se1 9ey

Design by Manntree in United Kindom





Burberry Sloane

Burberry is a world-renowned luxury brand with a 165-year history, synonymous with British style and elegance. The new flagship store is located in London's South West 1 (SW1), known as 'One Sloane Street'. This is where Thomas Burberry, the founder of Burberry, set up his first store 130 years ago, and it is still the global headquarters of the brand, which has never stopped promoting British style.

With the creation of the flagship store at One Sloane Street, Mantree is linking the brand's past with its present and uniting Mantree UK's expertise in the art of interior decoration.

Mantree Paint.Inc and Burberry have teamed up to create a collection of wallcoverings exclusively for Burberry's flagship store at 1 Sloane in London, named Sloane to commemorate this historic moment for the world's luxury brand.

Thanks to the exceptional feel and construction of their surfaces, which met Creative Director Riccardo Tisci's discerning eye, the unique virgin fleece material was given a bespoke name in tribute to the crossover association, Burberry Sloane.

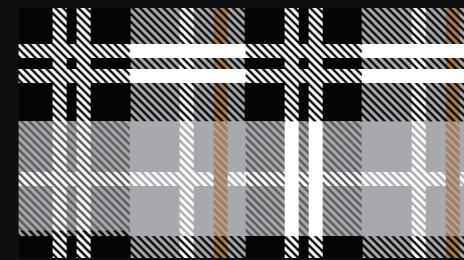
In order to meet Creative Director Mr. Riccardo Tisci's mental expectations for a distinctive effect with the downy texture of a primrose feather, we tried 18 different materials to match the best solution. The contrasting textures strike a harmonious balance between ruggedness and luxury, strength and softness.

The "Barberisloan", which has been tested and adjusted, is an expression of craftsmanship and exploration, and exudes a classic style.

Now, Mantoux brings this original metallic feeling to China, pushing more British elements in the design.



Riccardo Tisci



Burberry
Sloane

Burberry Sloane



TCF+0669(20g)

MBS+0669(10g)



TCF+M78(20g)

MBS+M78(10g)



TCF-Based

MBS-Based



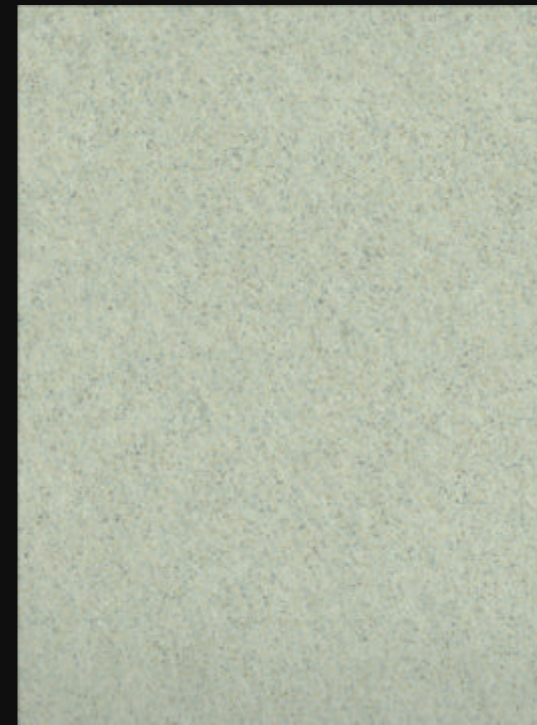
TCF+M63 (20g)

MBS+M63 (10g)



TCF+M107 (20g)

MBS+M107 (10g)



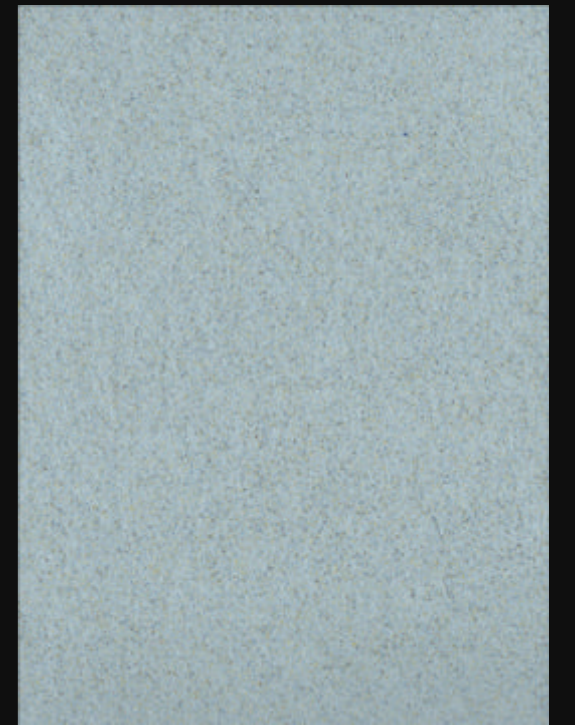
TCF+M64 (20g)

MBS+M64 (10g)



TCF+M75 (20g)

MBS+M75 (10g)

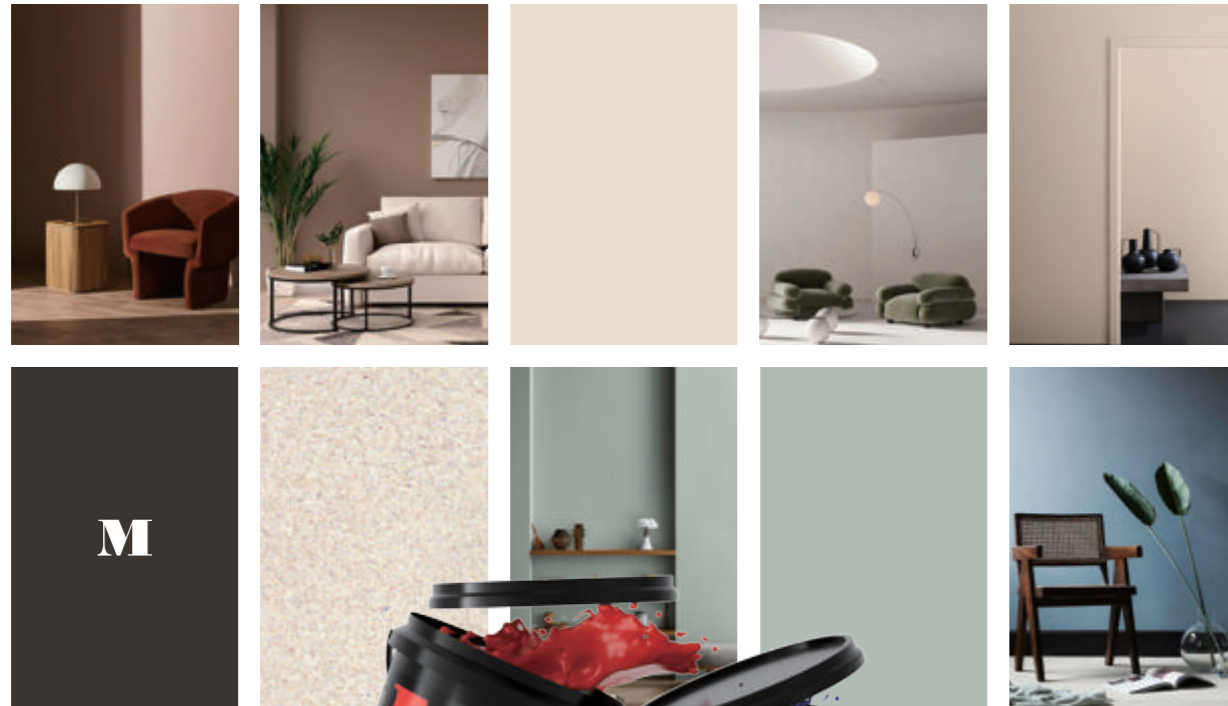


TCF+M81 (20g)

MBS+M81 (10g)

/
Contrasting Elements
Of Different Textures
Achieve A
Harmonious Balance
Between
Ruggedness And Luxury
Strength And
Softness.

Excellent Feel & Construction



manntree.co.uk

CLASSIC STYLE

/ Contrasting Elements Of Different Textures
Achieve A
Harmonious Balance Between
Ruggedness And Luxury Strength And Softness.

manntree.co.uk





Burberry

Burberry Sloane

Manntree[®]
— Paint My Love —



TCF+M62 (20g)

MBS+M62 (10g)



TCF+M75 (200g)

MBS+M75 (100g)



TCF+M78 (200g)

MBS+M78 (100g)



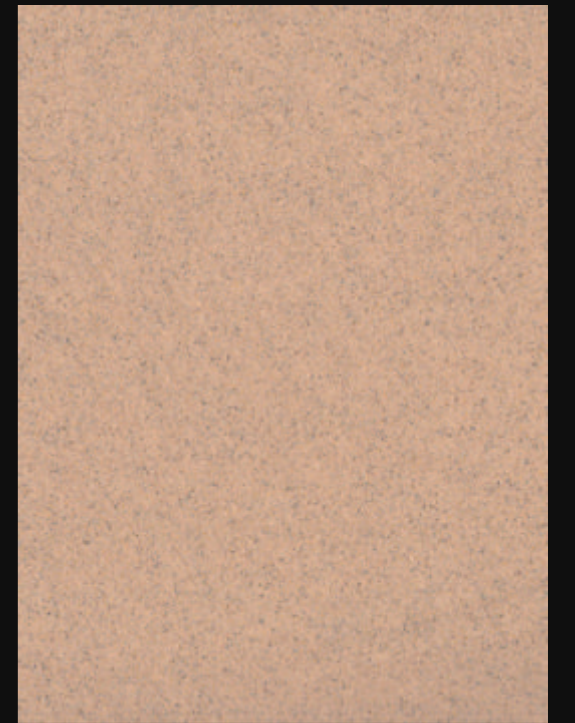
TCF+0672 (20g)

MBS+0672 (10g)



TCF+M74 (200g)

MBS+M74 (100g)



TCF+0672 (200g)

MBS+0672 (100g)

Burberry Sloane

Contrasting elements of different textures achieve a harmonious balance between ruggedness and luxury, strength and softness.

Characteristics:	Superior feel and construction of surfaces		
Main ingredients	Primary Pashmina fluff powder, pearlescent powder, calcium carbonate powder	Net weight	5kg / barrel
Shelf life	12 months in dry condition at room temperature (at the time of original delivery)	Reference dosage	4-6m ² /kg/2times

Burberry Sloane

Precious sheep wool.

With the Industrial Revolution, Britain has established itself as a global dominant power. From the 19th century, the wool products of British Leicester sheep have been sold all over the world, possessing the quality that is renowned all over the world.

This is a high quality wool from the wool of Leicester sheep, which is locally known as "diamond fiber" because of its extremely low yield, with an adult sheep producing only 3-5kg each time, a net wool rate of 65%-68%, a wool length of 20-25cm, and a wool fineness of 44-48 counts. If this kind of product is used in the field of paint, it must be indelible to the touch of their surface.

Leicester Cashmere is a water-based art paint with a soft silky sheen, bringing more layers and dynamics to living spaces and business places. The soft wool gives a warm and cozy feeling in winter, and the light silky sheen provides a crystalline coolness in summer. Now, Mantua brings this original metallic feeling to China and incorporates more British elements in the design.

Technical description

- ① Different batches of materials can not be applied to the same wall.
- ② Different substrates will make the color (possibly) different.
- ③ The material that has been mixed with water should be used up within 24 hours.
- ④ Waterproof Super Wax must be used when applying to non-waterproof walls or in lavatories.

Features

- ① Selected Kashmiri cashmere fabrics.
- ② Looming light mercerizing
- ③ Faint brush marks
- ④ Soft touch like covering with a soft cashmere shawl.

Base surface requirements

- ① Cement mortar substrate needs to be maintained for more than 6 days, PH less than 11 degrees
- ② Neutral putty, leveling, sanding, dust can be directly after construction
- ③ The mortar base needs to be leveled and polished with putty powder, and alkaline putty should be maintained for about 15 days.
- ④ When renovating the old wall, the base surface needs to be flat and free of cracks, shedding, bulging, dust and oil stains.

Matters needing attention

- ① Please mix thoroughly first.
- ② Pay attention to the critical point of the environment: it can not be applied if the temperature is lower than 5°C and the relative humidity is higher than 85%.
- ③ Please keep it out of the reach of children.

Scope of application

High-quality European wall velvet, suitable for interior wall decoration, and must not be exposed to moisture.

At the same time, it has high-quality cashmere texture

We recommend using it in the living room or study/bedroom.

Technical support

Feel free to visit Manntree's official website www.manntree.co.uk

to get the latest information about this product.

TOOLS



Wool Roller



Pig Hair Brush



Paint Mixer

Construction Technology

Note: Under normal circumstances, each construction interval of at least 4-6 hours



- ① Please mix "Sloane" well before use.



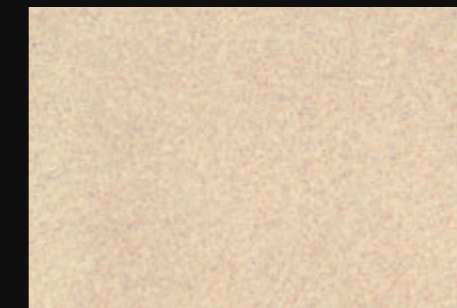
- ② Evenly paint a colored- primer, after painting the bottom layer should be completely waterproof.



- ③ Add about 30% water for dilution.



- ④ Paint the wall 1-2 times in an irregular pattern.



- ⑤ Finished effect.

Note: Under normal circumstances, the interval between each construction is at least 4-6 hours.